

Olson's *Red Power*

Performance Bull & Female Sale

At the ranch ~ Argusville, ND ~ Noon meal ~ 1:00 Sale

Thursday

Feb. 19, 2026

Thursday



56 Lots Selling!

*Red Angus & Herefords Bulls
Select Heifers & Bred Females*

Celebrating
90 Years
*of excellence in
registered cattle!*

~ General Sale Information ~

Sale Time: 1:00 CST, Thursday, February 20, 2025. Complimentary noon lunch.

Location: At the ranch. From Argusville on I-29: 7 West on Cass Co. #4, 1 North & ½ West. From Casselton on I-94: 10 North on ND #18, 5 West, 1 North & ½ East. 20 miles NW of Fargo.

Motels: Holiday Inn, Fargo 701-282-7200. Governors Inn, Casselton 888-847-4524.

Airline Service: Fargo Hector International Airport is served by United, American & Allegiant.

Delivery: Free delivery to central points up to 300 miles. We will work to facilitate further distances at cost. Take your bull home sale day and get \$50 off.

Wintering: We can keep your bull free of charge until April 1st, then we deliver.

Guarantee: All Cattle are fully guaranteed by the standards set by the American Red Angus and American Hereford Associations. Coming two-year-old bulls will be fertility checked prior to the sale. We will test yearlings before delivery of April 1st.

Terms: Terms of the sale are cash or check. Settlement must be made immediately following the sale before animals can be loaded out or delivered. Any corrections from the auction block or sale supplement sheet take priority over printed material in this sale catalog.

Liability: All attending the sale do so at their own risk. OHR assumes no responsibility for accident or injury.

EPD's: All EPDs are current as of Jan 30, 2025. As yearling weights, DNA results and scrotal measurements are recorded the EPDs may change by sale day. Registration numbers are provided so you can research animals further with the breed associations.

Cattle on Display: All sale cattle are at the ranch. We invite you to stop prior to the sale and look them over and visit with us. Many of the mothers and sires are also here. Videos of the sale offering will also be available at our website ahead of the sale. Cattle will be displayed in pens next to our heated sale facility. This is a video sale - cattle will not enter a sale ring.

Herd Health: Our herd is Johnes Free. All bulls will be tested for BVD. All cattle were Vaccinated and boosted with Bovi Shield Gold 5 and Ultra Bac 7/Somubac at weaning. They were poured with Ivomec at weaning and in January with CleanUp II and given Multi Min 90. Vet work supervised by Dr Darin Peterson, Casselton Vet Service - 800-216-9985.

Supplement Sheet: More info will be available prior to the sale including: Ribeye, Marbling, Back Fat, Scrotal cm and Pelvic Areas. Also at our website; www.olsonredpower.com.

Mail or Phone Bids: Bidders unable to make the sale may contact the Olsons or a sale staff member to assist in the bidding process. DVAuction will broadcast the sale live on the internet where you can watch and bid. Further info on that listed below.

Sale Staff:

Kyle Gilchrist, Auctioneer.....641-919-1077

Kevin Murnin, AHA.....406-853-4638

Kirby Goettsch, Farm & Ranch Guide.....605-380-3939

Logan Hoffmann, DVAuction.....701-388-2618

Nolan Woodruff, ARA-Commercial Marketing.....805-861-0996

<u>Page</u>	<u>Catalog Index</u>
2-9	Red Angus Bulls
10-13	Red Angus Heifers
14-16	Red Angus Reference Sires
17	Hereford Reference Sires
18-25	Hereford Bulls
26-27	Hereford Heifers
28	Baldy Heifers
29-30	Red Angus Bred Females
31	Hereford Bred Females

This sale will be broadcast live on the internet.

DVAuction
Broadcasting Real-Time Auctions

1. Create an account at www.dvauction.com under the register tab.
2. Apply for bidding approval by clicking on the ""details"" tab at least 24 hours prior to the auction. A DV representative will notify you once you have been approved.
3. Tune in for the sale and make your purchases.
 - ~ High speed internet is required for successful bidding.
 - ~ Our full-time support team can be reached at 402-316-5460
 - ~ Or type a message to the operator during the sale.

Cattlemen,

Thanks for taking time to look at our Red Power sale offering! In addition to the bulls we are offering 10 Red Angus bred heifers. We had a strong set of bred heifers this year and feel good about offering some of them to you. We will also have a few hereford breds and 2 open heifers.

Again we submitted DNA on the bulls to confirm parentage and genetically enhance the EPD profile. This will increase the accuracy of the numbers and give a clearer picture of an animal's true value. We are waiting for some enhanced EPDs and will have updates on sale day.

We hope you can be with us on Thursday the 20th in our heated facility. If you can't make the sale it will be broadcast on DVAuction and videos will be posted there ahead of the sale. We have some who buy sight unseen - We guarantee your satisfaction!

Our family has been in the registered cattle business since 1936 and we are committed to providing you great Red Angus & Herefords that are productive, problem free and developed to last. Contact us if you have any questions.

*Sincerely,
The Olsons*



From left: Stetson, Lindsay, Dru, Carl, Edward, Jeanne, Caryn, Evie, Craig, Maxwell & Laura

Olson Family Cell Phones

Carl.....701-361-0684

Edward.....701-238-3601

Jeanne.....701-866-5779

Lindsay.....701-388-5801

Craig.....701-367-6704

Caryn.....701-367-4434

RED OHR ANGUS

Ed & Jeanne Olson - Carl & Lindsay Olson
16068 24th St SE - Argusville, ND 58005
Email: olsoncandc@aol.com

Polled Herefords

Ed's cell 701-238-3601
Carl's cell 701-361-0684

www.olsonredpower.com

Breeding High Quality Registered Cattle Since 1936!

~ Red Angus 2 Year Old Bulls ~



1 <i>OHRR Mister 101 22M</i>					EPDs:
22M	OHRR	2/16/24	100% 1A	5044875	BW -0.2
RLC Ambition 174J LRL Ambition G87 <hr/> Sire RLC Scarlet 200F					WW 85
DCND Annabelle 101 OHRR 152C TWG Vessel 161F <hr/> Dam OHRR 23Y HT Annabelle 19G					YW 136
					Milk 26
					Stay 18
					REA .21
					Marb .30
					Wts:
					BW 92
					WW 628

2 year old Ambition son with good length of body that comes from the great Annabelle cow family. Top 4% for WW, top 6% for YW and top 8% for CW. Should be able to service lots of cows and add growth.



2 <i>OHRR Mandate 123J 35M</i>					EPDs:
35M	OHRR	2/24/24	100% 1A	5037113	BW 1.6
RLC Ambition 174J LRL Ambition G87 <hr/> Sire RLC Scarlet 200F					WW 78
OHRR Juno Oh 116A 123J DCND Oh Boy 1810 <hr/> Dam OHRR 29S- Copper Trista 116A					YW 132
					Milk 29
					Stay 16
					REA .08
					Marb .10
					Wts:
					BW 83
					WW 574

Another good Ambition 2 year old that traces on the dam side to great maternal sires Trust and Dakota Copper. Dam raised our best heifer the year before that sold in the ND Red Select sale to DK Red Angus. She has a great udder, beautiful look and a 104 MPPA. Top 9% for YW and 6% for ADG.



3 <i>OHRR Muchmore 6Y 58M</i>					EPDs:
58M	OHRR	3/08/24	100% 1A	5037115	BW -1.3
RLC Ambition 174J LRL Ambition G87 <hr/> Sire RLC Scarlet 200F					WW 76
OHRR 146T Trista Anna 6Y Red Global Trust 21T <hr/> Dam OHRR Copper Annabelle 146T					YW 132
					Milk 28
					Stay 18
					REA .25
					Marb .57
					Wts:
					BW 90
					WW 613

Dam raised this bull at 13 years of age. Grandmother is possibly our #1 Dakota Copper daughter ever with a 108 MPPA and perfect in every way! I guess that's what you get from a daughter of the original Annabelle 107J who tallied a 109 MPPA! Good looking bull also. Top 8% YW, 4% ADG.

*Updated EPD's will be available on our website or sale day. As weights and genetic data come in they may change. Videos will be there also.
Go to: www.olsonredpower.com*

2025 Red Angus Breed EPD averages -(Non Parent)						
BW	WW	YW	Milk	Stay	Marb	REA
-1.8	65	104	26	14.6	.45	.16

~ Red Angus 2 Year Old Bulls ~



4

OHRR Modelo 29H 61M

61M OHRR

3/10/24

100% 1A

5024561

RLC Ambition 174J

LRL Ambition G87

Sire

RLC Scarlet 200F

OHRR Mahogany 1810 76F 42H

DCND Oh Boy 1810

Dam

OHRR Mahogany's GP 114X 76F

EPDs:

BW 0.3
WW 76
YW 122
Milk 28
Stay 19
REA .20
Marb .17

Wts:

BW 88
WW 657

One of the best bulls in the sale! This Ambition 2 year old has extra muscle shape and volume with a rock solid structure. He comes from a long line of high volume, great uddered females in the Mahogany family. If you sell your calves by the pound he might be the bull for you!



Lot 4

Great Grandmother of lot 4 >



114X

5

OHRR Murphy 17D 109M

109M OHRR

4/26/24

100% 1A

5024581

OHRR Complement 155D 5K

KJL/CLZB Complete 7000E

Sire

OHRR 155D

OHRR 66B Bucks Syrie 17D

Six Mile Buckshot 297B

Dam

OHRR 43X KR Ms Syringa 66B



EPDs:

BW -1.4
WW 78
YW 131
Milk 30
Stay 10
REA .25
Marb .59

Wts:

BW 95
WW 742

Another great coming 2 year old! Lots of shape, rib and performance with maternal excellence. Dam is our favorite Buckshot daughter with a 112 MPPA! Complement's mother has a 108 MPPA and one of the top yearling bulls in this sale. Complement puts extra muscle, rib and shape in the bulls.



Lot 5

**Great Grandmother of lot 5 >
~ Dam of Buckshot ~**



6314S

~ Red Angus Fall Bulls ~

6 <i>OHRR Monday 168H 132M</i>				EPDs:
132M	OHRR	11/25/24	100% 1A	5024735
TKP Confidence 299		Brown CRSB Confidence G1410		
Sire		Raisland Lakota 016-859		
OHRR Welma E709 7300 168H		RREDS Seneca E709		
Dam		LMG Miss Welma 7300		
<i>Very good fall bull from a productive good uddered cow family. Dam has a 105 MPPA, gdam is 104 and ggd is 105. Sire is a ¾ brother to the \$400,000 Hollywood. Should work well for heifers also.</i>				<u>Wts:</u> BW -1.8 WW 71 YW 119 Milk 31 Stay 16 REA -.01 Marb .52 BW 72 WW 698



Great Grandmother of lot 6 >
~ Dam of 7300 ~



7 <i>OHRR Mad Dog 130M</i>				EPDs:
130M	OHRR	11/18/24	100% 1A	5024731
TKP Confidence 299		Brown CRSB Confidence G1410		
Sire		Raisland Lakota 016-859		
OHRR Mahogany's PTO 150C 8H		KJHT Power Take Off		
Dam		OHRR 114X Mhngy Gema 150C		
<i>Heifer Bull from the great Mahogany cow line with excellent udder quality, big rib and good productivity. This dam side has extra punch with PTO and Game Plan in it. He's a well built bull with good muscling.</i>				<u>Wts:</u> BW -1.7 WW 72 YW 118 Milk 30 Stay 11 REA -.02 Marb .47 BW 64 WW 532

8 <i>3JF M596</i>				EPDs:
M596	3JF	10/23/24	100% 1A	5006991
Bieber Hard Drive G612		Bieber Hard Drive Y120		
Sire		Bieber Tilly 233U		
3J Ms Ororo D460		Red SSS Soldier 365W		
Dam		OHRR 63G Kimas Mahogany 105R		
<i>Heifer bull that also goes back to the great Mahogany line. We bought this guy and his mother in a dispersal. They purchased 105R from us and built a cowherd around her. He is dark colored with good muscle.</i>				<u>Wts:</u> BW -2.0 WW 59 YW 89 Milk 21 Stay 17 REA .21 Marb .40 BW 66 WW 523

~ Red Angus Yearling Bulls ~

9 ***OHRR Nashville 155D 12N***
 12N OHRR 1/19/25 100% 1A 5198841

RLC Ambition 174J	LRL Ambition G87
Sire	RLC Scarlet 200F
OHRR 155D	Six Mile Spencer 111B
Dam	OHRR 211T-5T Avalana 97Z

<u>EPDs:</u>	
BW	0.8
WW	80
YW	126
Milk	26
Stay	16
REA	.17
Marb	.31
<u>Wts:</u>	
BW	90
WW	700

Very good long bodied Ambition son out of Complement's mother, who boasts a 108 MPPA! Her grandsire, Landmark 5T, sold for \$26,000 to ABS. Complement sold for \$20,000 half interest to L83 Ranch. Excellent genetics with powerful growth and dark color. Also in top 10% for WW and 15% for YW.



Dam of lot 9 & 5K >



10 ***OHRR Net Worth 8157 17N***
 17N OHRR 1/23/25 100% 1A 5198867

Jacobson Wrencher 1024	Jacobson Mechanic 9118
Sire	Jacobson Fuchia 9249
Jacobson Kima 8157	Jacobson Front 6136
Dam	Jacobson Kima 3185

<u>EPDs:</u>	
BW	0.3
WW	71
YW	117
Milk	31
Stay	15
REA	.06
Marb	.38
<u>Wts:</u>	
BW	88
WW	727

Powerful Wrencher son with good muscle and performance. His mother is a high volume cow with plenty of milk and a 108 MPPA. Granddam below her has a 106 MPPA and Wrencher's mother sits at 103. A very good bull backed by productive females.



~ Red Angus Yearling Bulls ~

11 *OHRR None Better 40Z 8N*

8N OHRR 1/18/25 100% 1A 5198853

TKP Confidence 299 Brown CRSB Confidence G1410
Sire Raisland Lakota 016-859

OHRR 146T-72X Anabelle 40Z OHRR 513 Dakota Trust 72X
Dam OHRR Copper Annabelle 146T

One of the better Complement sons in the sale from a long line of productive females from the Annabelle family. Dam has a 110 MPPA and is going strong in our herd at 14 years old. Grandmother was a Dakota Copper daughter that had a 108 MPPA.

EPDs:	
BW	-0.2
WW	70
YW	112
Milk	32
Stay	16
REA	.06
Marb	.46
Wts:	
BW	87
WW	653



12 *OHRR Nate 30L 20N*

20N OHRR 1/25/25 100% 1A 5198843

LRL Exxon L79 Dahlke Rockefeller 009H
Sire LRL Flo-Marie H138 ET

OHRR La Moha 56H 30L DCND Direct Brilliance 971
Dam OHRR Mahogany 134E 82D 56H

Great bull for breeding heifers. Sire is -4.9 BW and sired by the Semex Sire Company bull Rockefeller who is -3.5 BW. Dam is by 971 who we used on heifers for 2 years. Top 8% BW, top 6% Calving Ease Direct, top 7% ProS and top 11% Marbling also.

EPDs:	
BW	-4.8
WW	56
YW	87
Milk	27
Stay	18
REA	-.13
Marb	.72
Wts:	
BW	60
WW	633

13 *OHRR Nyquil 141B 28N*

28N OHRR 1/27/25 100% 1A 5198865

RLC Ambition 174J LRL Ambition G87
Sire RLC Scarlet 200F

OHRR 26Z Ms Hobo 141B L83 Hobo 106
Dam OHRR 211U- 120X CQ Trsta 26Z

Heifer bull with the pedigree to back it up. Dam has 105 MPPA and goes back to Dakota Copper's mother, Trust and Annabelle. Good old school pedigree here.

EPDs:	
BW	0.5
WW	79
YW	126
Milk	25
Stay	19
REA	.12
Marb	.31
Wts:	
BW	69
WW	601

~ Red Angus Yearling Bulls ~

14 ***OHRR Navorro 141C 25N***

25N OHRR 1/26/25 100% 1A 5198849

RLC Ambition 174J	LRL Ambition G87
Sire	RLC Scarlet 200F
OHRR 113A-67A Mahgny 141C	OHRR 28R Macks Vic 114A
Dam	OHRR 14M-HiC G Magogny 113A

Another good bull for breeding heifers. We used his sire on heifers for 2 years with great success. Grandsire 114A was also used on heifers. He is well made and dark colored with nice shape. Grandmother pictured below from Mahogany family had a 106 MPPA.

<u>EPDs:</u>	
BW	-0.7
WW	74
YW	118
Milk	18
Stay	18
REA	.17
Marb	.35
<u>Wts:</u>	
BW	78
WW	626



Grandmother of lot 14 >



15 ***OHRR Norfolk 123J 31N***

31N OHRR 1/28/25 100% 1A 5198835

OHRR Complement 155D 5K	KJL/CLZB Complete 7000E
Sire	OHRR 155D
OHRR Juno Oh 116A 123J	DCND Oh Boy 1810
Dam	OHRR 29S-Copper Trista 116A

Heifer bull. Sired by Complement who sires good muscle and nice performance while keeping his -4.1 BW EPD. Dam is one of our better young cows with a 104 MPPA and also the mother of lot 2 in this sale. She traces to Trust and Dakota Copper - staples of our herd. Top 6% Milk.

<u>EPDs:</u>	
BW	-1.7
WW	60
YW	101
Milk	32
Stay	15
REA	-.11
Marb	.51
<u>Wts:</u>	
BW	78
WW	589

16 ***OHRR Nathan 16H 40N***

40N OHRR 2/04/25 100% 1A 5198845

TKP Confidence 299	Brown CRSB Confidence G1410
Sire	Raisland Lakota 016-859
OHRR Vaya 28F 866E 16H	Six Mile Encarnacion 866E
Dam	OHRR 7D Cooper Vaya 28F

Good bull sired by our ¾ brother to the \$400,00 Hollywood bull. Dam has a 107 MPPA - she descends from 866E and Game Plan who are both elite in breed for milk. This bull is in top 4% for milk, 7% for WW, 8% for YW, 8% for CW and 10% for ADG.

<u>EPDs:</u>	
BW	-0.5
WW	82
YW	133
Milk	33
Stay	13
REA	.21
Marb	.45
<u>Wts:</u>	
BW	93
WW	669

~ Red Angus Yearling Bulls ~

17 *OHRR Neighbor 49D 46N*

46N OHRR 2/06/25 100% 1A 5198863

OHRR Complement 155D 5K KJL/CLZB Complete 7000E

Sire OHRR 155D

OHRR 85Y Buckshot Elle 49D Six Mile Buckshot 297B

Dam OHRR 9010 Elle Lana 85Y

Another good Complete son - this one is out of the powerful Elle cow family. Dam is 10 years old with a 104 MPPA, 85Y was 102 and her mother was 105. Complement's mother has a 108 MPPA. Should breed good performance, high maternal and great udder quality!

EPDs:

BW 1.0
WW 75
YW 123
Milk 26
Stay 14
REA .10
Marb .54

Wts:

BW 93
WW 644

18 *OHRR Nixon 137E 54N*

54N OHRR 2/09/25 100% 1A 5198847

OHRR Complement 155D 5K KJL/CLZB Complete 7000E

Sire OHRR 155D

OHRR 77Z Ms Trista 137E OHRR 6W Krugerand 149B

Dam OHRR 17W-T Dak Trista 77Z

Dark colored, shapely Complement son from a great uddered, stout made, easy doing Krugerand daughter. Grandmother is a very good Trust daughter that goes back to Dakota Copper's mother. He should producer very good females and bulls with shape.

EPDs:

BW -1.1
WW 65
YW 106
Milk 27
Stay 15
REA -.01
Marb .47

Wts:

BW 88
WW 665



Lot 18

Grandmother of lot 18 >



77Z

19 *OHRR Newman 50F 71N*

71N OHRR 2/20/25 100% 1A 5198839

RLC Ambition 174J LRL Ambition G87

Sire RLC Scarlet 200F

OHRR 81D-3Y Copper Saga 50F OHRR 6W Copper Saga 149C

Dam OHRR 3Y-53W Sweet Becka 81D

Another good Ambition son that goes back to old school, high maternal genetics on the bottom side with Buckshot and Sakic. 81D granddam had a 105 MPPA and her mother was at 109. It will be interesting to see what the genomic test says.

EPDs:

BW 0
WW 77
YW 121
Milk 22
Stay 17
REA .23
Marb .33

Wts:

BW 90
WW 617

~ Red Angus Yearling Bulls ~

20	<i>OHRR Nationwide 2013 58N</i>	
58N OHRR	2/11/25	100% 1A
		5198837

OHRR Complement 155D 5K	KJL/CLZB Complete 7000E
Sire	OHRR 155D
STRA MTX 2013	STRA Admiral 0150
Dam	STRA MTX 0193

EPDs:	
BW	-2.9
WW	75
YW	123
Milk	29
Stay	15
REA	-.02
Marb	.52
Wts:	
BW	73
WW	780

Heifer bull plus! Stout made, heavy muscled, high performance son of our high seller in the 2023 sale. Dam is a moderate, hard working three year old we selected from Tweet Red Angus who has earned a 109 MPPA. This dude is rock solid and pushes the scale down.

Retaining ½ semen interest



*Updated EPD's will be available on our website or sale day. As weights and genetic data come in they may change. Videos will be there also.
Go to: www.olsonredpower.com*



~ Red Angus Bred Heifers ~

GGP

21 *OHRR Mona 95J 48M*

48M OHRR 3/03/24 100% 1A 5040973

RLC Ambition 174J	LRL Ambition G87
Sire	RLC Scarlet 200F
OHRR Jayda Rhodes 137E 95J	RREDS Seneca E709
Dam	OHRR 77Z Ms Trista 137E

<u>EPDs:</u>	
BW	2.6
WW	87
YW	143
Milk	24
Stay	15
REA	.35
Marb	.18
<u>Wts:</u>	
BW	97
WW	634

Angular, dark colored bred heifer from our high performance, stout made herdsire - Ambition. Dam is a powerful, good milker with a 103 MPPA from a long line of good udders and consistent producers. Top 3% for WW and YW. Same great pedigree as the heifer below with Trust and Seneca.

Due March 7th to L83 Contingent 21M



77Z - grandmother of 52M

Great granddam of 48M

GGP

22 *OHRR Macie 137E 52M*

52M OHRR 3/05/24 100% 1A 5040965

RLC Ambition 174J	LRL Ambition G87
Sire	RLC Scarlet 200F
OHRR 77Z Ms Trista 137E	OHRR 6W Krugerand 149B
Dam	OHRR 17W-T Dak Trista 77Z

<u>EPDs:</u>	
BW	0.2
WW	75
YW	111
Milk	24
Stay	19
REA	.20
Marb	.22
<u>Wts:</u>	
BW	92
WW	644

A very good, dark colored, well built Ambition bred heifer. Dam and grandmother are on the moderate side with super udder quality and great eye appeal. Sire is powerful grandson of legendary Merlin.

Due April 10th to L83 Contingent 21M

GGP

23 *OHRR Madelyn 141C 69M*

69M OHRR 3/17/24 100% 1A 5040945

TKP Confidence 299	Brown CRSB Confidence G1410
Sire	Raisland Lakota 016-859
OHRR 113A-67A Mahgny 141C	OHRR 28R Macks Vic 114A
Dam	OHRR 14M-HiC G Magogny 113A

<u>EPDs:</u>	
BW	-3.3
WW	59
YW	94
Milk	24
Stay	17
REA	.08
Marb	.54
<u>Wts:</u>	
BW	80
WW	433

One of the first daughters to sell out of our ¾ brother to the \$400,000 Hollywood. Lots of milk, good udders and high volume females on this dam side with the Mahogany family.

Due March 14th to L83 Contingent 21M

~ Red Angus Bred Heifers ~

GGP

24 *OHRR Medora 40H 72M*

72M OHRR 3/19/24 100% 1A 5037119

RLC Ambition 174J	LRL Ambition G87
Sire	RLC Scarlet 200F

OHRR Annabelle's PTO 17B-40H	KJHT Power Take Off
Dam	OHRR 34W GP Annabelle 17B

Stout made, correct, dark colored, attractive bred heifer. Powerful pedigree top and bottom with PTO, Game Plan and Annabelle. We are excited to get these first daughters of Ambition into production.

Due March 2th to LRL Exxon L79 with heifer calf

EPDs:	
BW	-1.9
WW	79
YW	121
Milk	25
Stay	16
REA	.15
Marb	.16
Wts:	
BW	82
WW	577



25 *OHRR Melissa 4A 87M*

87M OHRR 3/28/24 100% 1A 5040929

OHRR Complement 155D 5K	KJL/CLZB Complete 7000E
Sire	OHRR 155D

OHRR 84Y-GP Ms Mahgny 4A	PIE Game Plan 0618
Dam	OHRR-MM 56N Ms Mahgny 84Y

A moderate, fancy, angular made, dark colored daughter of our great Complete son that topped this sale 3 years ago. Dam is the powerful Mahogany 4A who finished with a 103 MPPA - for many years she was at 108. Should be a very nice mating to our really good Rockefeller son.

Due March 14th to LRL Exxon L79

GGP

EPDs:	
BW	-2.5
WW	53
YW	89
Milk	28
Stay	14
REA	-.05
Marb	.77
Wts:	
BW	80
WW	471



~ Red Angus Bred Heifers ~

GGP

26

OHRR Millie 78K 101M

101M OHRR

4/11/24

100% 1A

5037123

OHRR Completor 75Y 53K

KJL/CLZ Complete 7000E

Sire

OHRR 25R Copper Lana 75Y

OHRR Franchesca 43X 78K

9 Mile Franchise 6305

Dam

OHRR 97S Diva Anna 43X

Well built, moderate bred heifer from a stout made son of the great Complete bull. Dam is a good young daughter of the popular Franchise sire and from our powerful 43X cow who finished her production history with an impressive 109 MPPA.

Due March 10th to LRL Exxon L79



53K - sire of lot 26

EPDs:

BW -2.8
WW 59
YW 104
Milk 27
Stay 19
REA .18
Marb .43

Wts:

BW 67
WW 429

27

OHRR Misty 44Z 105M

105M OHRR

4/20/24

100% 1A

5037127

RLC Ambition 174J

LRL Ambition G87

Sire

RLC Scarlet 200F

OHRR 28R-29K Copr Tana 44Z

OHRR Dakota Copper 29K

Dam

OHRR 74S Macks Tana 28R

Another high quality, deep bodied bred heifer from the heart of our replacements. Dam is a direct daughter of the legendary Dakota Copper 29K with a 103 MPPA. Ambition adds some punch to an already good and productive female. Top 5% for Stayability.

Due February 28th to L83 Contingent 21M with a heifer calf



44Z - dam of 105M

GGP

EPDs:

BW -0.8
WW 76
YW 115
Milk 25
Stay 20
REA .10
Marb .13

Wts:

BW 80
WW 572

~ Red Angus Bred Heifers ~

28 *OHRR Makayla 132K 106M*

106M OHRR 4/23/24 87.5% 1B 5040939

OHRR Completor 75Y 53K KJL/CLZ Complete 7000E
Sire OHRR 25R Copper Lana 75Y

OHRR Kalli Black 136G 132K TWG Vessel U63D
Dam OHRR 17Y Black Lana 136G

EPDs:
BW -1.2
WW 68
YW 106
Milk 24
Stay 13
REA .18
Marb .66
Wts:
BW 77
WW 545

Another good, high volume, dark colored, well built bred heifer from the stout made, attractive Complete son. She is 87.5% because a sire back in her pedigree didn't get DNA submitted but he was purebred RA. Safe with a heifer on the way by Exxon - He is top 10% for BW, Marb, ProS & GM.

Due February 24h to LRL Exxon L79 with a heifer calf



Lot 28



Lot 29

29 *OHRR Madison 75J 107M*

107M OHRR 4/24/24 100% 1A 5040937

DCND Direct Brilliance 971 Collier Brilliance R487
Sire CER Ms. Red Canyon 6110D

OHRR Janine 85Y 75J LJC Merlin 937Z
Dam OHRR 9010 Elle Lana 85Y

EPDs:
BW -3.2
WW 63
YW 101
Milk 23
Stay 16
REA .07
Marb .08
Wts:
BW 75
WW 538

Pretty complete, wedge shaped, well designed daughter of Direct Brilliance who we used on heifers for 2 years. Dam is old school Merlin from the good uddered productive Lana family. Mated to the well muscled, deep bodied Complement son we purchased last year from Lodoens

Due March 4th to L83 Contingent 21M

30 *Vanweye Split Rock 410*

410 VW 3/29/24 100% 1A 4960714

Bieber Energize K285 Bieber CL Energize F121
Sire Bieber Surprise 515E

Vanweye Split Rock 126 3SCC Domain A163
Dam Vanweye Split Rock 517

EPDs:
BW -2.7
WW 72
YW 116
Milk 27
Stay 15
REA -.22
Marb .49
Wts:
BW 62
WW 594

Moderate, correct, well built bred heifer that is a granddaughter to the widely used Energize bull out of the ABS sire lineup. Dam is a nice daughter of Domain who was in the Genex Sire group.

Due March 9th to L83 Contingent 21M

~ Red Angus Reference Sires ~



GGP	
EPDs:	
BW	-2.6
WW	68
YW	100
Milk	24
Stay	17
REA	.18
Marb	.30
Wts:	
BW	75
WW	789
YW	1221

DCND Direct Brilliance 971

*Collier Brilliance R487 * Andras New Direction R240*



GGP	
EPDs:	
BW	-4.1
WW	65
YW	111
Milk	29
Stay	12
REA	-.01
Marb	.83
Wts:	
BW	72
WW	745
YW	1263

*Semen
For Sale*

- 1 yr

OHRR Complement 155D 5K

*KJL/CLZB Complete 7000E * Six Mile Spencer 111B*



GGP	
EPDs:	
BW	0.8
WW	100
YW	159
Milk	22
Stay	18
REA	.34
Marb	.37
Wts:	
BW	88
WW	809
YW	1290

*Semen
For Sale*

RLC Ambition 174J

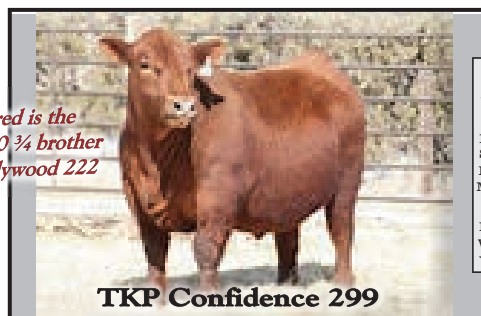
*LRL Ambition G87 * Bar M Sasquatch 6225*



GGP	
EPDs:	
BW	-1.3
WW	68
YW	114
Milk	26
Stay	18
REA	.19
Marb	.59
Wts:	
BW	86
WW	675
YW	1126

OHRR Completer 75Y 53K

*KJL/CLZB Complete 7000E * OHRR 107J Landslide 113R*



GGP	
EPDs:	
BW	-1.4
WW	93
YW	156
Milk	32
Stay	10
REA	.41
Marb	.67
Wts:	
BW	83
WW	756
YW	1437

*Pictured is the
\$400,000 ¾ brother
Pie Hollywood 222*

TKP Confidence 299

~ Red Angus Reference Sires ~



Six Mile Encarnacion 866E - 1 year

*Red U-2 Reconing 149A * Red Six Mile Travelocity 318X*

GGP

EPDs:
 BW -4.3
 WW 52
 YW 72
 Milk 36
 Stay 14
 REA -.05
 Marb .25

Wts:
 BW 68
 WW 618
 YW 1206



Trump's Maternal Brother

DCND Oh Boy 1810 - 4 years

*Red NL Gaf Crush 168 * Red Fine Line Mulberry 26P*

GGP

EPDs:
 BW -1.1
 WW 43
 YW 68
 Milk 35
 Stay 13
 REA -.30
 Marb .14

Wts:
 BW 87
 WW 711
 YW 1267



LRL Exxon L79 - 1 yr

*Dahlke Rockefeller 009H * Bieber Hard Drive Y120*

GGP

EPDs:
 BW -5.0
 WW 78
 YW 108
 Milk 29
 Stay 18
 REA -.03
 Marb 1.03

Wts:
 BW 75
 WW 654
 YW 1186



RREDs Seneca E709 - 4 yrs

*RREDs Sneca 713C * Bieber Romeo 9477*

GGP

EPDs:
 BW 0.1
 WW 58
 YW 101
 Milk 26
 Stay 12
 REA .13
 Marb .27

Wts:
 BW 88
 WW 702
 YW 1270



TWG Vessel U63D - 4 year

*Red Ringstead Kargo 215U * 4L Advancer R547*

GGP

EPDs:
 BW 0.1
 WW 64
 YW 94
 Milk 25
 Stay 14
 REA -.11
 Marb .38

Wts:
 BW 61
 WW 825
 YW NA

~ Red Angus Reference Sires ~



EPDs:	
BW	-0.6
WW	68
YW	112
Milk	23
Stay	23
REA	-.10
Marb	.43
Wts:	
BW	84
WW	834
YW	1410

Red Global Trust 21T - 2 years

*LCC Above & Beyond 1300S * Milk Crk Cub 722*

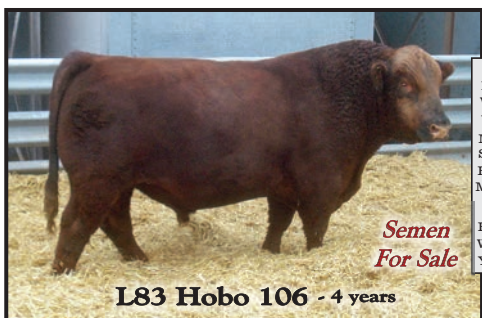


EPDs:	
BW	0.4
WW	73
YW	114
Milk	35
Stay	13
REA	-.13
Marb	.72
Wts:	
BW	68
WW	727
YW	na

*Semen
For Sale*

Pie Game Plan 0618 - 16 months

*VGW Game Plan 508 * Buf Crk Chf 824-1658*



EPDs:	
BW	-1.7
WW	54
YW	84
Milk	19
Stay	17
REA	-.34
Marb	.50
Wts:	
BW	84
WW	681
YW	1195

*Semen
For Sale*

L83 Hobo 106 - 4 years

*Buf Crk Hobo 1961 * Red Fine Line Mulberry 26P*



EPDs:	
BW	1.8
WW	57
YW	84
Milk	24
Stay	11
Fat	.13
REA	.22
Marb	
Wts:	
BW	86
WW	826
YW	na

*Semen
For Sale*

Six Miles Spencer 111B - 1 year

*MRLA New Era 87Y * 5L Norseman King 2291*



EPDs:	
BW	1.6
WW	74
YW	113
Milk	27
Stay	13
REA	.25
Marb	.09
Wts:	
BW	82
WW	849
YW	na

Six Mile Buckshot 297B - 1 year

*XO Crowfoot 0102X * Red SSS Ole 746P*

~ Polled Hereford Reference Sires ~



AHA Ranking		
EPDs:		
BW	1.8	
WW	71	7%
YW	121	3%
Milk	37	5%
M&G	73	2%
Scr	1.7	5%
REA	1.00	2%
Marb	.38	10%
Wts:		
BW	79	
WW	760	
YW	1312	

Also in top
1% for C Wt.
1% for CHB

NJW 79Z Z311 Endure 173D ET * CMF 116B Tori 250D

Semen Sold Out

Embryos for sale by Z14 and 126!



AHA Ranking		
EPDs:		
BW	1.4	
WW	63	
YW	94	
Milk	21	
M&G	53	
Scr	0.9	
REA	70	
Marb	.53	3%
Wts:		
BW	78	
WW	816	
YW	1362	

Also in top
4% for CHB,
Udder & Teat

CMF 1720 Gold Rush 596G ET * Mohica THM Excede Z426

Semen 25\$ - Non Certificate

Other sires with semen for sale:

OHR 543G Gold Power 779K

TH 6153 Imprint 956J ET

Contact

OLSON

Hereford Ranch

16068 24th St SE - Argusville, ND 58005

Carl 701-361-0684 ~ Lindsay 701-388-5801 ~ olsoncandc@aol.com

www.olsonredpower.com

Breeding High Quality Registered Herefords Since 1936!



Bulls should have updated GE EPDs a week prior to the sale. Videos of the sale offering will be posted on our website:
www.olsonredpower.com

Hereford EPD Averages for 2024 & 2025 Calves - (Non Parent)

BW	WW	YW	Milk	M&G	Scr	REA	Marb	CHB
2.5	57	90	27	55	1.1	.48	.15	124

~ Polled Hereford 2 Year Old Bulls ~



31

OHR Holland 37B 25M

25M OHRR

2/17/24

Polled

44610712

CMF OHR 250D Holland 625H

NJW 79Z Z311 Endure 173D ET

Sire

CMF 116B Tori 250D

OHR Banner Girl 100W 37B ET

NJW 73S M326 Trust 100W ET

Dam

ANL 60D Banner Girl 1K

EPDs:	
BW	2.5
WW	65
YW	109
Milk	37
M&G	70
Scr	1.3
REA	.85
Marb	.08
CHB	145
Wts:	
BW	86
WW	586

Holland 2 year old that is well made with good numbers and a great maternal pedigree. Dam is powerful, high milking daughter of the great 1K cow that was our pick of the ANL cow sale where she had a 108 ratio on her calves! He's a breed improver for 16/20 traits & in top 5% for Milk and M&G also top 7% for REA.



Lot 31

Grandmother >



32

OHR Holland Z14 42M

42M OHRR

2/27/24

Polled

44610692

CMF OHR 250D Holland 625H

NJW 79Z Z311 Endure 173D ET

Sire

CMF 116B Tori 250D

Mohican Karen Z14

TH 133U 719T Upgrade 69X

Dam

ANL 35U Victoria 59X

EPDs:	
BW	1.4
WW	60
YW	103
Milk	44
M&G	74
Scr	1.3
REA	.46
Marb	.29
CHB	151
Wts:	
BW	74
WW	621

Really good Holland 2 year old from out of our great Z14 donor who is still in our herd at 14 years old raising our heaviest heifer calf last year and holding a 108% nursing ratio. He is 100% pigmented and in top 1% for Milk and top 2% for M&G. We have used 3 of her sons in our herd.



Lot 32

Dam of Lot 32 >



Z14

~ Polled Hereford 2 Year Old Bulls ~



33

OHR Holland 41G 40M

40M OHRR

2/26/24

Polled

44610687

CMF OHR 250D Holland 625H

NJW 79Z Z311 Endure 173D ET

Sire

CMF 116B Tori 250D

RVP 100W Wild Green 41G

NJW 73S M326 Trust 100W ET

Dam

Glenlees DBK 9W Wilda 24B

EPDs:	
BW	2.6
WW	61
YW	103
Milk	38
M&G	68
Scr	1.7
REA	.77
Marb	.12
CHB	140
Wts:	
BW	86
WW	586

Holland 2 year old that is well made with good numbers, a great maternal pedigree and 100% pigmentation. A maternal brother sold to Roger Gibson in Oklahoma. Dam is goes back to tank 45P and the great 1K picture 2 lots prior. Top 4% Milk, top 5% Scrotal, top 7% M&G.



Maternal brother >



34

OHR/DKM K76 Stallion H086 M42

M42 DKM

1/29/24

Scurred

44538103

SHF Houston D287 H086

SHF Daybreak Y02 D287 ET

Sire

SHF Miss 14 20Z D223

DKM W58 Dana 1801 K76

DKM/GTN Whit 10W 1801 ET

Dam

FPH Ms Vicki Boomer P606 W58



EPDs:	
BW	3.1
WW	59
YW	89
Milk	30
M&G	60
Scr	1.1
REA	.68
Marb	.23
CHB	136
Wts:	
BW	76
WW	646

Nice 2 year old that we used on heifers last year because he was low on birth and had a different pedigree. Houston daughters are ratioing 102.3 on their calves. W58 grandmother by P606 is a DOD raising 9 calves at 108%. Also a breed improver for 14/20 traits.



~ Polled Hereford Fall Bulls ~

35 <i>Lund Domino M2</i>					EPDs:
M2	MDC	7/31/24	Polled	44723193	BW 2.9
Pyramid Homegrown 0251					WW 51
Sire					YW 77
FHF 9116 Polly 154B					Milk 36
JF WCC Miss Sensation 64E 48J					M&G 62
Dam					Scr 1.2
NJW 76S 028X Sensation 64E ET					REA .44
JF 190Z Tina Marie 49D					Marb -.06
					CHB 92
					Wts:
					BW 79
					WW 553

Heifer bull with good length of body. Sired by a grandson of Homergrown 8Y who left wonderful daughters and is still in the top 1% of the breed for Milk. Dam has powerful genetics behind her with Sensation, Traildust and About Time. Homozygous polled & broke to lead.

36 <i>OHR Lund Dewey M4</i>					EPDs:
M4	8/29/24	Polled	44723196		BW 3.9
CMF OHR 250D Holland 625H					WW 62
Sire					YW 106
CMF 116B Tori 250D					Milk 34
OHR Luxi 76U 137J					M&G 65
Dam					Scr 1.4
OHR MDK Dakitch Deluxe Z14 80E					REA .75
OHR Revlon 71P 76U					Marb .18
					CHB 156
					Wts:
					BW 74
					WW 598

Homozygous polled fall bull that could work on heifers depending on the results of his GE EPDs. Dam side is stacked with good udders and productive females with Z14 and 76U. Holland worked well on a variety of cows keeping BW down and quality high.



Son of 76U >



37 <i>OHR Lund Drago M5</i>					EPDs:
M5	9/14/24	Twin	Polled	44533198	BW 3.4
CMF OHR 250D Holland 625H					WW 67
Sire					YW 113
CMF 116B Tori 250D					Milk 34
OHR Valley Girl 34D 33J					M&G 67
Dam					Scr 1.3
OHR Validation 6E 2G					REA .72
OHR Elizabeth 142Z 34D					Marb .29
					CHB 155
					Wts:
					BW 61
					WW 517

Heifer Bull with pretty balanced EPD's and good length of body. Dam is a granddaughter of carcass giant - Validated and maternal greats in Caretaker, Progress and 1K. Homo Polled and free of all defects too.

~ Polled Hereford Fall Bulls ~

38

CMF OHR 546G Golden 52M

52M CMF 9/30/24 Polled 44634384

CMF 1720 Gold Rush 569G ET NJW 79Z Z311 Endure 173D ET

Sire L III TFL C609 Victoria 1720

CMF 63U Sara 546G

KCF Bennett Homeward C776

Dam

CMF 769P Sara 63U

EPDs:	
BW	0.5
WW	60
YW	92
Milk	31
M&G	60
Scr	.8
REA	.54
Marb	.54
CHB	183
Wts:	
BW	66
WW	637

Heifer Bull with extra muscle shape, length and pigment. Sired by the popular Gold Rush bull from Select Sires lineup. Dam has a 105 nursing ratio with a great look and super udder. He's a breed improver for 15/20 traits and in top 5% for Marbling, CHB, BMI and BIL. Homo Polled.



Lot 38

Dam of Lot 38 >



546G

39

CMF OHR 635H Golden 22M

22M CMF 9/10/24 Polled 44634377

CMF 1720 Gold Rush 569G ET NJW 79Z Z311 Endure 173D ET

Sire L III TFL C609 Victoria 1720

CMF 253D Ann 635H

Innisfail WHR X651/723 4013 ET

Dam

CMF 97B Ann 253D

EPDs:	
BW	1.5
WW	72
YW	107
Milk	25
M&G	61
Scr	1.0
REA	.67
Marb	.54
CHB	184
Wts:	
BW	71
WW	614

Another Heifer Bull sired by Gold Rush. He also has the good length, extra pigmentation and quality mother. Dam has plenty of milk with extra capacity and depth of rib. He is in the top 5% for Marbling, CHB, BMI, BIL, SCF and Carcass Wt. Homozygous polled.



Lot 39

Dam of Lot 39 >



635H

~ Polled Hereford Fall Bulls ~

40 *CMF OHR 583H Gun Smoke 23M*

23M CMF 9/01/24 Polled 44638597

Stellpflug Gunsmoke 222 ET JDH AH Benton 8G ET

Sire NJW 202C 4013 Homemaker 90H ET

CMF E914 Dominette 583H Gerber Anodyne 001A

Dam Pollard Dominette E914 ET

Heifer Bull sired by the National Champion - Gunsmoke. This guy has plenty of growth and performance to add also. Dam has averaged progeny ratios of 102.5 for weaning and 109.5 for REA. Bottom side of pedigree traces to breed legends X51, 45P and 19D. Top 10% for REA, Marbling, CHB and Udder.

EPDs:	
BW	2.2
WW	66
YW	107
Milk	28
M&G	61
Scr	1.0
REA	.80
Marb	.41
CHB	176
Wts:	
BW	74
WW	605



Dam of lot 40 >



41 *CMF OHR 812K Kaiser 28M*

28M CMF 9/15/24 Polled 44634379

CMF 297D Kaiser 790K ET RST Final Print 0016

Sire CMF 124B Dominette 297D

CMF 584 Mercedes 812K CMF 1720 Gold Rush 569G ET

Dam CMF 8F48 Mercedes 584H

Great bull for heifers and according to his EPD profile he should sire good growth and carcass also. Dam has a 103 WWR on her calves. Top 10% or better for WW, YW, M&G, REA, CHB, Udder & CW. Grandmother on top side, 297D, is also the mother of our herdsire Heavy Weight.

EPDs:	
BW	1.6
WW	76
YW	118
Milk	30
M&G	68
Scr	.9
REA	.99
Marb	.29
CHB	161
Wts:	
BW	66
WW	582



A genetically verified female program for the commercial beef industry.

Benefits

- Added market exposure
- Genetic verification
- Maximized hybrid vigor

Requirements

- Sired by a bull battery ranking in the top 50% of the breed for the Baldy Maternal Index (BMI\$) or the Profitability and Sustainability Index (ProS)
- Bull ownership transferred



RED ANGUS
RANCH TESTED. RANCHER TRUSTED.
(940) 387-3502

PremiumRedBaldy.org

**AMERICAN
HEREFORD**
CATTLE ASSOCIATION
(816) 842-3757

~ Polled Hereford Fall Bulls ~

42 *OHR Old Dutch 92F 117M*

117M OHRR 11/02/24 Polled 44705958

CMF OHR 250D Holland 625H NJW 79Z Z311 Endure 173D ET

Sire CMF 116B Tori 250D

OHR Karen Z14 92F NJW 135U 10Y Hometown 27A

Dam Mohican Karen Z14

EPDs:	
BW	1.8
WW	61
YW	101
Milk	37
M&G	68
Scr	1.4
REA	.71
Marb	.17
CHB	149
Wts:	
BW	77
WW	698

Heifer Bull. Heavy muscled, deep bodied, dark colored and fully pigmented. Dam has a 103 WWR on her calves and is a daughter of our Z14 donor who has a 108 WWR on 9 calves. Top 5% for Milk and top 7% for M&G and CW. Also a breed improver for 15/20 traits.



Grandmother of lot 42 >



43 *OHR Netherlands 77A 124M*

124M OHRR 11/06/24 Polled 44705957

CMF OHR 250D Holland 625H NJW 79Z Z311 Endure 173D ET

Sire CMF 116B Tori 250D

OHR Sunny Delight 87T 77A OHR Redeye 51R 24X

Dam OHR Sunny 415E 87T ET

EPDs:	
BW	1.9
WW	65
YW	108
Milk	33
M&G	65
Scr	1.2
REA	.83
Marb	.35
CHB	180
Wts:	
BW	74
WW	634

Great bull for heifers and will produce wonderful females. Dam ratios 105.5 on weaning 8 calves and is still going in our herd. She has one daughter that ratios 112.5. He is a breed improver for 17/20 traits and in top 2% for CW, 3% for CHB and 8% for REA. Homozygous polled.



~ Polled Hereford Fall Bulls ~

44 <i>OHR Amsterdam 586C 125M</i>					EPDs:	
125M	OHR	11/08/24	Polled	44705960	BW	2.0
CMF OHR 250D Holland 625H					WW	60
Sire					YW	99
CMF 116B Tori 250D					Milk	34
K&B Lorelie 586C					M&G	64
Dam					Scr	1.4
K&B Ambassador 140Y 1ET					REA	.74
K&B Misty 123Y					Marb	.28
					CHB	168
					Wts:	
					BW	80
					WW	617

Heifer Bull. Holland has kept birth weight down on a variety of cows and also remains in the top 25% for calving ease. This bull is a breed improver for 19/20 traits and in top 10% for CW and CHB. Dam side traces to 3027 and Dams of Distinction in generations 3 and 4.

45 <i>OHR The Hague 91F 135M</i>					EPDs:	
135M	OHR	11/29/24	Polled	44705961	BW	1.4
CMF OHR 250D Holland 625H					WW	57
Sire					YW	97
CMF 116B Tori 250D					Milk	28
OHR Georgie Girl 96C 91F					M&G	57
Dam					Scr	1.3
Dakitch MDK Caretaker 51B					REA	.57
OHR Georgie Girl 10Y 96C					Marb	.18
					CHB	149
					Wts:	
					BW	70
					WW	700

Another good heifer bull from a long line of great uddered females. Dam side includes maternal greats: Caretaker, Hometown & Headline. This bull is also a breed improver for 17/20 traits. Homozygous polled.

46 <i>Baldy Bull 127M</i>					EPDs:	
127M	OHR	11/10/24	Polled	Not registered	BW	Na
Hereford					WW	Na
Sire					YW	Na
Hereford					Milk	Na
OHR Mahogany's PTO 150C 8H					M&G	Na
Dam					Scr	Na
KJHT Power Take Off					REA	Na
OHR 114X Mhngny Gena 150C					Marb	Na
					CHB	Na
					Wts:	
					BW	72
					WW	637

Good red baldy bull from the very maternal Mahogany family. When looking at his birth weight, his phenotype and his dam side pedigree I feel comfortable calling him a good bull for breeding heifers. The baldy bulls we have sold in the past have had lots of interest.

See videos of the sale offering at:
www.olsonredpower.com

Olson's Red Power Advantage:

- + More performance, muscle & maternal excellence.
- + Carcass, performance, scrotal & pelvic data available.
- + Bulls tested for BVD & from Johnes Free herd.
- + Bulls developed on roughage ration to ensure soundness.
- + Free wintering on bulls over \$5000, 300 mile delivery.
- + \$50 discount if you take your bull home sale day.
- + Reputation breeder of quality registered cattle since 1936!

~ Polled Hereford Yearling Bulls ~

47 *OHR Solid Gold 27H 26N*

26N OHRR 1/27/25 Polled 44720432

OHR 396F Solid Gold 800K CMF 1720 Gold Rush 569G

Sire CMF 132B Victoria 396F

OHR Lady Frontier 76U 27H TH Frontier 174E

Dam OHR Revlon 71P 76U

EPDs:	
BW	2.3
WW	61
YW	96
Milk	28
M&G	58
Scr	1.2
REA	.66
Marb	.16
CHB	138
Wts:	
BW	80
WW	693

Stout made, well muscled yearling bull from a productive, great uddered dam side. Dam is a high scoring Frontier daughter with a 105.5 WWR on her calves. This bull is also a breed improver for 17/20 traits. Solid Gold was high seller in our 24 sale that we were able to use on a few head. Grandmother pictured on lot 36. Homozygous polled also.

48 *OHR Barracuda 2L 37N*

37N OHRR 2/01/25 Polled 44723181

OHR 874S Barracuda 807K Behm 100W Cuda 504C

Sire 3S Ms Flashy Sullivan 3X 874S

OHR Annabelle 34H 2L CMF OHR 297D Heavy Weight 628H

Dam OHR Frontiers Lady 417B 34H

EPDs:	
BW	1.6
WW	68
YW	112
Milk	34
M&G	68
Scr	1.3
REA	.75
Marb	.24
CHB	157
Wts:	
BW	73
WW	752

Heifer bull with good length, performance, pigment and a very nice 2 year old mother. Dam had a nice show career and now starts her motherhood with an impressive 128 ratio on this dude! Nice EPD profile and a breed improver for 14/20 traits. To top it off he's homo polled.

49 *OHR Holland 157F 30N*

30N OHRR 1/28/25 Polled 44723182

CMF OHR 250D Holland 625H NJW 79Z Z311 Endure 173D ET

Sire CMF 116B Tori 250D

OHR Banner Girl CT 145C 157F Dakitch MDK Caretaker 51B

Dam OHR Banner Girl 24X 145C

EPDs:	
BW	2.9
WW	65
YW	108
Milk	33
M&G	66
Scr	1.2
REA	60
Marb	17
CHB	144
Wts:	
BW	90
WW	617

Long bodied, heavily pigmented Holland son from a powerful Caretaker daughter with a 107 production ratio on her calves. Granddam 145C is a direct daughter of 1K that start it all. Good udder quality, extra pigment and good performance are trademarks of the Banner Girl line. He is also a breed improver for 15/20 traits.



Great grandmother of lot 49 >



1K

~ Polled Hereford Coming 3 Year Old ~



50 OHR Heavy Weight 72G 91L

91L OHR 4/14/23 Polled 44519840

CMF OHR 297D Heavy Weight 628H NJW 79Z Z311 Endure 173D ET

Sire

CMF 124B Dominette 297D

OHR Melania 37W 72G ET

TH 400U 32X Trump 206Z

Dam

Ms Dakitch MDK Pearl 37W

EPDs:	
BW	2.1
WW	65
YW	112
Milk	26
M&G	59
Scr	1.1
REA	.76
Marb	.12
CHB	161
Wts:	
BW	87
WW	563

Stout made, heavy muscled, big bodied coming 3 year old by a ¾ brother to Holland. Grandmother pictured below is a DOD with 8 calves weaned at 105.6. Her mother is a DOD with a 104 ratio on 14! Breed improver for 14/20 traits and top 10% for YW, CHB and CW. We used him on cows last spring and he just finished breeding our fall calvers.



Lot 50

Grandmother of lot 50 >



37W

~ Polled Hereford Heifers ~

51 OHR Golden Girl 95H 23N

23N OHR 1/26/25 Polled 44723186

OHR 396F Solid Gold 800K

CMF 1720 Gold Rush 569G

Sire

CMF 132B Victoria 396F

OHR Velvet 322C 95H

BK KKH SSF Buckeye B27 ET

Dam

KJ BJ 319X Velvet 322C ET

EPDs:	
BW	2.7
WW	60
YW	93
Milk	24
M&G	54
Scr	1.0
REA	.62
Marb	.37
CHB	150
Wts:	
BW	81
WW	576

Fancy heifer right from the heart of our replacements. Mother is a Dam of Distinction that has weaned 4 calves at 108! Granddam was 2016 Reserve Calf Champion Heifer in Denver and in our herd to date. Sire was a top seller in this sale 2 years ago. She is a breed improver for 15/20 traits and is broke to tie. We think she has show potential.



Lot 51

Grandmother of lot 51 >



322C

~ Polled Hereford Heifers ~

52 <i>OHR Goldie Lux 50F 43N</i>				
43N OHR	2/05/25	Polled	44723248	
OHR 396F Solid Gold 800K		CMF 1720 Gold Rush 569G		
Sire		CMF 132B Victoria 396F		
Mohican Plus 50F		NJW PMH 66X 156T Lux 206A ET		
Dam		Mohican Plus 230Y ET		

EPDs:	
BW	2.6
WW	58
YW	84
Milk	25
M&G	54
Scr	.7
REA	.47
Marb	.27
CHB	128
Wts:	
BW	88
WW	487

Attractive heifer sired by our high seller in this sale 2 years ago. Dam was selected from Mohican in Montana for her strong maternal pedigree that goes back to Mr Maternal, 719T, Nasdaq and Durango. She is broke to tie up and has show potential.



~ Polled Hereford Bred Females ~



53 <i>SSF 5208 Ms Mandate 559</i>				
559	1/01/24	Polled	44535977	
/S Mandate 66589 ET		R Leader 6964		
Sire		/S Lady Domino 0158X		
JH Lass Z311 0209 5208		KCF Bennett Encore Z311 ET		
Dam		WHF Dominette 0209		

EPDs:	
BW	0.5
WW	56
YW	88
Milk	27
M&G	55
Scr	0.9
REA	.42
Marb	.49
CHB	142
Wts:	
BW	75
WW	659

Stout made, high volume bred heifer sired the widely used Mandate. Dam has a 102.4 WWR on 5 calves and is a direct daughter of the high performance Bennett Encore. DNA confirms her to be homozygous polled.

Due April 9th to OHR Durabull Z14 107K ET



~ Polled Hereford Bred Females ~



54 <i>OHR Holly 125Y 113M</i>			
113M OHRR	5/20/24	Polled	44610806
CMF OHR 250D Holland 625H		NJW 79Z Z311 Endure 173D ET	
Sire		CMF 116B Tori 250D	
Ms Dakitch MDK Charity 125Y		Harvie Dan T-Bone 196T	
Dam		Ms Dakitch Charity Lady 72U	

EPDs:	
BW	3.0
WW	59
YW	102
Milk	34
M&G	64
Scr	0.8
REA	.76
Marb	.21
CHB	155
Wts:	
BW	78
WW	556

May bred heifer that is made well and out of a 13 year old power cow who carried a 105 ratio on her calves! Due to calve 5 days after the sale to a Validated son from a Warrior daughter.

Due February 24th to OHR/DKM K10 Smith B413 M56

55 <i>RWF Heifer 83M</i>			
83M OHRR	3/24/24	Polled	unregistered
Unknown		Unknown	
Sire		Unknown	
OHR Pearl CT 37W 145G		Dakitch MDK Caretaker 51B	
Dam		Ms Dakitch MDK Pearl 37W	

EPDs:	
BW	Na
WW	Na
YW	Na
Milk	Na
M&G	Na
Scr	Na
REA	Na
Marb	Na
CHB	Na
Wts:	
BW	75
WW	600

Stout fancy well made bred heifer from one of our best Caretaker daughters with a 109 WWR on her calves. Her mother is a DOD with a 106 production ratio. They couldn't find a sire to match her DNA.


Due March 10th to OHR/DKM K10 Smith B413 M56

56 <i>RWF Cow 3L</i>			
3L OHRR	1/24/23	Polled	unregistered
Unknown		Unknown	
Sire		Unknown	
OHR Lady Frontier 76U 27H		TH Frontier 174E	
Dam		OHR Revlon 71P 76U	

EPDs:	
BW	Na
WW	Na
YW	Na
Milk	Na
M&G	Na
Scr	Na
REA	Na
Marb	Na
CHB	Na
Wts:	
BW	75
WW	600

A very well built 3 year old that did not DNA to any Hereford sires. Dam has a 103 WWR. Her first calf is a yearling bull in this sale. Frontier is known for good daughters and udder quality and she has it.

Due April 1st OHRR Complement 155D 5K



Leedstone
Keeping Families on the Farm™

Animal Health & Pharmacy

Family & veterinarian owned since 1994.
www.Leedstone.com

Aaron Mosolf
Territory Manager, N Dakota
amosolf@Leedstone.com

Order 877.608.3877
Mobile 701.715.4636
Fax 320.256.4014

Business Office:
222 County Road 173 SE
Melrose, MN 56352

This sale will be broadcast live on the internet.



Amazing Acres



In 2025 we opened a new family business called Amazing Acres. It features activities for kids and family fun for all ages. We were open mid August thru end of October. Activities include: Corn maze, sunflower maze, wagon rides, pumpkin patch, bale mountain, duck races, bale mazes, corn pit, gem mining, veggie launching, tire mountain, obstacle course, farm animals, slides, barrel train, games, stick horse races and lots of photo opps! Adding more as we go.

----- Open weekends and for special events -----

Find us on facebook & instagram at: [amazingacresnd](#)

Lindsay, Stetson, Dru & Carl

Out in the sunflower maze at Amazing Acres



Red Power Bull Sale

16068 24th St SE
Argusville, ND 58005

Return Service Requested

